

ELISE: OPTION A – CONSTRUCTION TUTORIAL FOLDED CUFFS

Author: Rosie | Date: December 2017

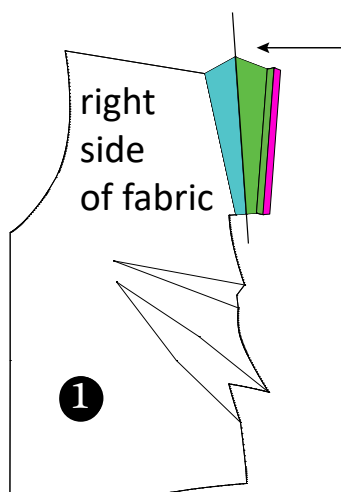
WHY THIS TUTORIAL?

Several Elise sewists mailed us asking how to construct the cuff of the fold up sleeve (option A)? Apparently following the sewing instructions from the book wasn't complete enough to get it right.

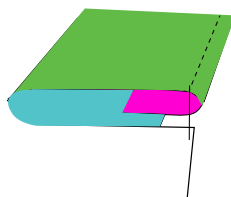
We learned that it would be helpful to make an extra tutorial where we would go through the construction steps in more detail.

For some of you it became clear when we explained it is the same construction as a fold up pant. Meaning you first fold the hem (cuff) inwards and then to right side again (oh, aha!).

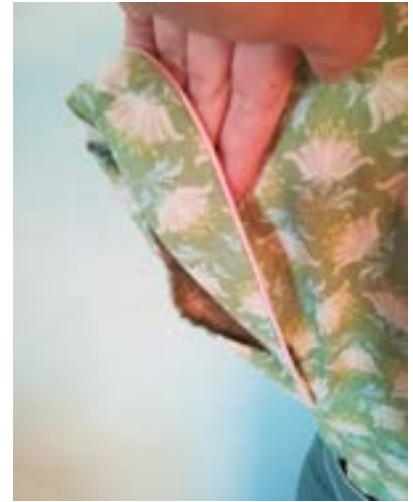
But we are living in a visual world and we often won't completely understand until it is made visual (I know I'm one of them myself) by using for example photos and/or illustrations. We did place photos with the sewing instructions in the patternbooklet (step 3 - 5). But to support these we made several illustrations that hopefully will bring a better understanding on how to go about these tricky cuffs!



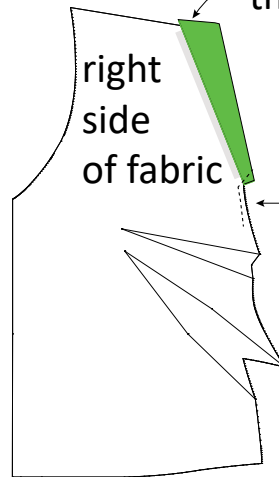
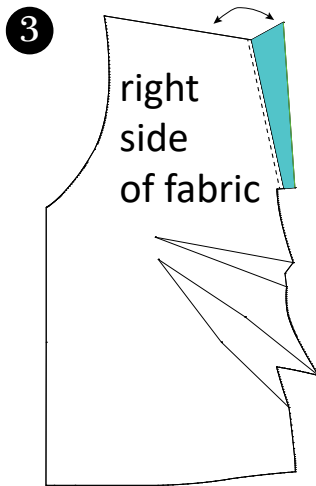
Fold the hem (in pink) inwards. Then fold the cuffs over the widest part to the wrong side. In case you used piping cord to finish your cuffs, then this would be the fold line.



Fold the cuff seam inwards and stitch closed. You will stitch through 3 layers of fabric.



Fold the cuffs, 1 cm away from the stitched hem seam, to the right side. The cuffs will fall over the shoulder



to secure the cuffs you can hand baste them (blind) to the shoulder seam

Place Back Panel on top of Front Panel (right sides facing) and stitch the sideseams closed. Stitch through the cuffs in a rounded curve (see stitch line).

EXTRA NOTE:

The Front Panel that is used in the example above is the pattern for the Elise Blouse in Plus sizes. This pattern has two darts, where the Elise in standard sizes only has one dart.

This illustration is only to show the cuff construction which is the same for both Elise size versions.



Hopefully this extra tutorial brings a happy 'cuff-eureka-moment'!

If not, then please mail your question to info@rosieandme.com and we hope to be able to help you then.